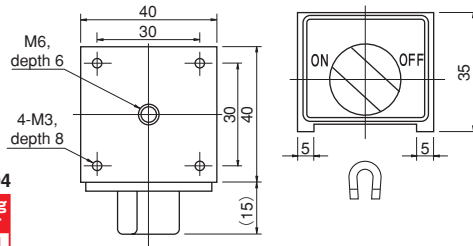


Model MB MAGNETIC HOLDER BASE



MB-0404
Holding Power
200N
or over



[Application]

This base can be used widely as a magnetic force ON/OFF type magnetic base. It is designed small and is useful as a base for temporarily mounted legs of equipment, sensors and lasers by mounting a jig using tapped holes or by some additional machining.

[Features]

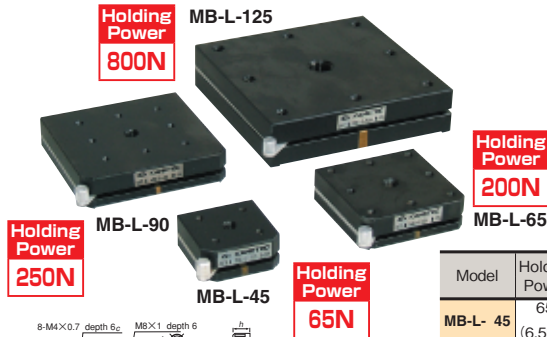
- The base can be mounted and demounted easily using the select lever.
- Compact but powerful magnetic force.
- Waterproof and oilproof construction.

[mm (in)]

Model	Holding Power	Dimensions			Mounting Hole	Mass
		Width	Height	Length		
MB-0404	200N (20kgf) or over	40 (1.57)	35 (1.37)	40 (1.57)	4-M3 (0.11) Depth 6 (Span30 (1.18))	0.4kg/0.8 lb

※ The holding power applies to SS400, thickness 25 mm and ground surface.

Model MB-L MAGNETIC HOLDER



An example of usage

For mounting base of precision equipment

[Application]

Suitable as a base for laser and other optical measurement. Because the ON-OFF holding power is adjustable, these are recommended where fine adjustment and accuracy are required.

[Features]

- Easy ON-OFF operation using the lever.
- Thin and powerful magnetic force.
- Dry specification.

[mm (in)]

Model	Holding Power	Dimensions			Center Tapped Hole	Peripheral tapped hole				Operating lever part			Mass
		W	H	L		P	A	b	c	S	d	h	
MB-L-45	65N (6.5kgf)	45	20	2.5 (0.09)	M8 (0.31) × P1.25	25	4 (0.15)	M4 (0.15) × P0.7 (0.02)	6 (0.23)	15 (0.59)	19 (0.74)	9 (0.35)	0.3kg/0.66 lb
MB-L-65	200N (20kgf)	65	20	4 (0.15)	M8 (0.31) × P1.25	25	8 (0.31)	M4 (0.15) × P0.7 (0.02)	6 (0.23)	19 (0.74)	24 (0.94)	10 (0.39)	0.6kg/1.32 lb
MB-L-90	250N (25kgf)	90	30	6 (0.23)	M16 (0.23) × P1.0	50	8 (0.31)	M6 (0.23) × P1.0 (0.037)	8 (0.31)	36 (1.41)	36 (1.41)	10 (0.39)	1.2kg/2.64 lb
MB-L-125	800N (80kgf)	125	30	6 (0.23)	M16 (0.23) × P1.0	50	8 (0.31)	M6 (0.23) × P1.0 (0.037)	8 (0.31)	36 (1.41)	36 (1.41)	10 (0.39)	3.3kg/7.27 lb

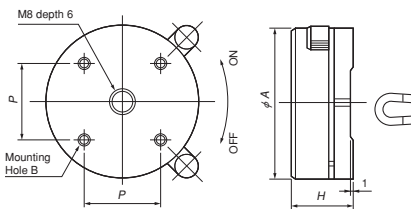
※ The holding power applies to SS400, thickness 25 mm and ground surface.

Model MB-L-C MAGNETIC HOLDER



MB-L-C50
Holding Power
59N

MB-L-C75
Holding Power
196N



[mm (in)]

Model	Holding Power	Dimensions			Mounting Hole		Mass
		A	H	P	B		
MB-L-C50	59N (6kgf)	50 (1.96)	20 (0.78)	25 (0.98)	M4 (0.15) Depth 6 (0.23)	0.30kg/0.6 lb	
MB-L-C75	196N (20kgf)	75 (2.95)	20 (0.78)	35 (1.37)	M4 (0.15) Depth 6 (0.23)	0.68kg/1.5 lb	

※ The holding power applies to SS400, thickness 25 mm and ground surface.

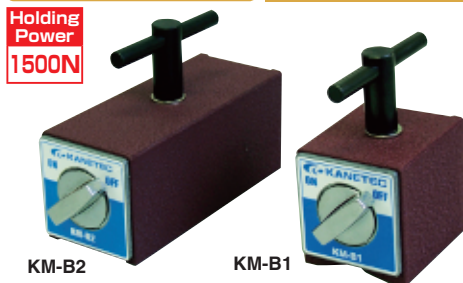
[Application]

Suitable as a base for laser and other optical measurement. Because the ON-OFF holding power is adjustable, these are recommended where fine adjustment and accuracy are required.

[Features]

- Easy ON-OFF operation using the lever.
- Thin and powerful magnetic force.
- Dry specification.

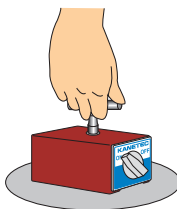
Model KM-B RULER HOLDER



KM-B2
Holding Power
1500N

Parts for sale!

KM-B1
Holding Power
800N



[Application]

Useful for a wide variety of operations; holding down a large ruler on a floor or wall during machining of iron plates, etc. and moving workpieces after cutting or holding and removing chips.
※ If used at high temperature, the holding power may drop.
※ For transporting heavy workpieces, Model HL-15 (P91) having a reinforced grip to withstand the weight is available.

[Features]

- Attachable and detachable easily by changeover lever.
- Attractive face is made in V-slot for KM-B1 and in inverted concave for KM-B2.

[mm (in)]

Model	Holding Power	Mounting Hole			Tapped Hole	Mass
		Width	Length	Height		
KM-B1	800N (80kgf)	50 (1.96)	58.5 (2.30)	55 (2.16)	M 8 (0.31) × 1.25 (0.04) Depth 7 (0.27)	1.1kg/2.4 lb
KM-B2	1500N (150kgf)		120 (4.72)	52 (2.04)		2.5kg/5.5 lb

※ The holding power applies to SS400, thickness 10 mm and ground surface.

ELECTROMAGNETIC CHUCKS

CHUCK CONTROLLERS

PERMANENT MAGNETIC CHUCKS

PERMANENT ELECTROMAGNETIC CHUCKS

BLOCKS FOR MC

VACUUM CHUCKS

PROMELTA SYSTEM

SINE BAR CHUCKS

MAGNETIC BLOCKS

WORKING TOOLS

MEASURING TOOL HOLDERS

MAGNETIC HOLDERS

MAGNETIC TOOLS