

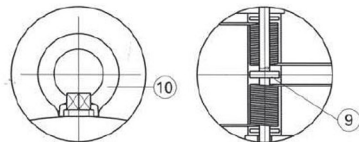
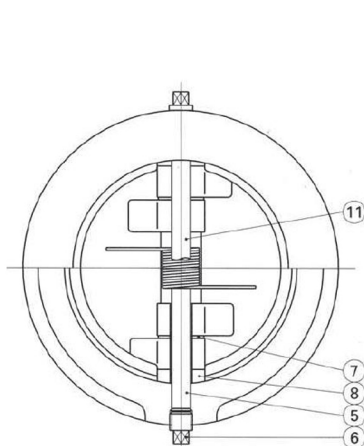
WORKING PRESSURES

Working pressure non-shock, water		Hydrostatic Test pressure	
		Shell	Seat
Psig	200	350	80
Bar.	8.6	24,1	5.5

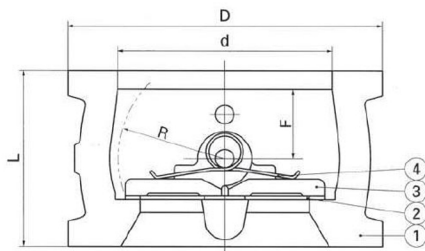
MATERIAL

No.	Name of pw	ASTM Specification	
1	Body	Cast Iron	A128 Class B
2	Body seat	Buna-N (standard material)	
3	Plate	Bronze	B584-C83600
4	Spring	Stainless Steel	A313 Type 316
5	Hinge pin	Stainless Steel	A276 Type 304
6	Plug	Steel	A576 Grade 1025
7	Plate washer	Teflon	
8	Body washer	Teflon	
9	Spring washer	6-20	Teflon
10	Eye bolt	6-20	Steel A307 Grade A
11	Stopper pin	Stainless Steel	A276 Type 304

No.	Name of parts	Temperature
	Buna-N	32 to 178°(0 to 80°C)
2	EPDM	·1410 212°F (-10 to 100°C)
	EPM(VITON)	-2210 302°F (-30 to 150°C)



Eye bolt & spring washer
for size 6 & larger



DIMENSIONS

Mark(mm)	D		d	L	R	F	
Size(in)	441F	442F					
2	in.	3.98	4.13	2.40	2.13	1.26	1.06
	mm	101	105	61	54	32	27
2 1/2	in.	4.76	4.88	2.87	2.13	1.46	1.06
	mm	121	124	73	54	37	27
3	in.	5.16	5.39	3.50	2.24	1.77	1.18
	mm	131	137	89	57	45	30
4	in.	6.14	6.89	4.49	2.52	2.09	1.26
	mm	156	175	114	64	53	32
5	in.	7.36	7.76	5.55	2.76	2.64	1.30
	mm	187	197	141	70	67	33
6	in.	8.54	8.74	6.61	2.99	3.11	1.38
	mm	217	222	168	76	79	35
8	in.	10.51	10.98	8.62	3.74	4.13	1.65
	mm	267	279	219	95	105	42
10	in.	12.99	13.39	10.75	4.25	5.04	1.65
	mm	330	340	273	108	128	42
12	in.	14.76	16.14	12.76	5.63	6.10	2.28
	mm	375	410	324	143	155	58
14	in.	16.54	17.76	14.02	7.24	6.69	1.70
	mm	420	451	356	184	170	94
16	in.	19.02	20.24	15.98	7.52	7.68	3.50
	mm	483	514	406	191	195	89
18	in.	21.18	21.61	17.99	7.99	8.62	3.39
	mm	538	549	457	203	219	86
20	in.	23.35	23.86	20.00	8.39	9.61	3.50
	mm	593	606	508	213	244	89

Related: cast iron, check valve, toyo

WEIGHT

lb.	kg.
7	3
9	4
11	5
13	6
20	9
22	10
42	19
68	31
123	56
157	71
218	99
260	118
397	180